

# SRP RESIDENTIAL GARAGE HEATERS

“GR” RESIDENTIAL GARAGE HEATERS ARE SHIPPED FULLY ASSEMBLED  
 C / W THERMOSTAT, WALL THIMBLE, 8' INTAKE / EXHAUST PIPES, GAS FLEX  
 CONNECTOR AND CEILING SUSPENSION HARDWARE.  
 BOTH THE GR 30 AND GR 45 ARE 9'- 6" LONG AND WEIGH 100 LBS PER CARTON.  
 WARRANTY : 3 YEARS 100% COMPONENTS



GR30N	30,000 BTU NAT. GAS	\$	1,818.00
GR30P	30,000 BTU PROPANE	\$	1,818.00
GR45N	45,000 BTU NAT. GAS	\$	1,888.00
GR45P	45,000 BTU PROPANE	\$	1,888.00

## Accessories

91414200	VENT TERMINAL	\$	27.30
2810400	90 DEGREE ELBOW PKG. ( 2" & 4" )	\$	42.20
91414500	2" OFFSET	\$	34.00
CG012	FLEX CONN. WITH SHUTOFF	\$	44.10
8051002	INSTALL KIT	\$	12.00
SIGN	SIGN	\$	32.00
3-2.	CHAIN FOR SIGN ( per foot )	\$	0.35
580-230	"S" HOOKS FOR SIGN ( each )	\$	0.35
2810406	90 DEGREE 2" ELBOW	\$	34.00
RT003	RE COUPLER	\$	28.15
RS022	"B" VENT ADAPTER	\$	324.75
PSM30SA	24 VOLT MECHANICAL STAT	\$	35.25

## PARTS

### GR Series

CE011	MOTOR / BLOWER ASSEMBLY	\$	331.10
CH002	GASKET	\$	4.75
CE160	AIR SWITCH, GR 30 .44"	\$	95.70
CE158	AIR SWITCH, GR 45 .29"	\$	95.70
CE008	TRANSFORMER - 115 / 24V, 20 VA	\$	30.50
CG060	W/R GAS VALVE - NATURAL GAS	Please Inquire	
RG021	VALVE TRAIN REPLACEMENT KIT NG	\$	200.15
RG022	VALVE TRAIN REPLACEMENT KIT LPG	\$	200.15
CE015	IGNITION CONTROL MODULE	\$	379.70
CE003	SENSE ELECTRODE	\$	23.40
RE019	SPARK ELECTRODE	\$	34.25
RG020	BURNER CUP ASSY (Includes Ignitors)	\$	77.30
CG120	VALVE CONV. KIT, NG TO LP (W/R)	\$	20.50
CG121	VALVE CONV. KIT, LP TO NG (W/R)	\$	20.50
RG032	GAS ORIFICE GR30 - NATURAL GAS	\$	13.90
RG033	GAS ORIFICE GR45 - NATURAL GAS	\$	13.90
RG034	GAS ORIFICE GR30 - PROPANE	\$	13.90
RG035	GAS ORIFICE GR45 - PROPANE	\$	13.90
CE006	IGNITION WIRE	\$	23.40

<b>PARTS Con't</b>		<b>GR Series</b>	
RR008	REFLECTOR – GR	\$	239.90
RR011	DECORATIVE GRILLE KIT – GR	\$	343.57
RT014	HEAT EXCHANGER ASS'Y – GR	\$	445.40
RT003	COUPLING - 2"	\$	28.15
RS006	WALL THIMBLE – GR	\$	27.90
CT005	EXHAUST TUBE - (ALUMINIZED 18G 88" x 2")	\$	43.65
RS020	PROTECTIVE COVER – Outdoor Installation	\$	299.50
RS021	COVER EXTENSION – Outdoor Installation @ 45 degrees tilt	\$	145.90
RS022	VERTICAL VENT ADAPTER	\$	324.75
<b>PARTS</b>		<b>RE Series</b>	
RR001	REFLECTOR – RE	\$	239.50
RE012	SPARK ELECTRODE	\$	34.25
RG001	BURNER CUP ASSEMBLY	\$	77.25
CE022	AIR SWITCH - RE30	\$	95.70
CE025	AIR SWITCH - RE45	\$	95.70
RG028	GAS ORIFICE KIT – RE30 NG	\$	16.35
RG029	GAS ORIFICE KIT – RE45 NG	\$	16.35
RG030	GAS ORIFICE KIT – RE30 LPG	\$	16.35
RG031	GAS ORIFICE KIT – RE 45 LPG	\$	16.35
CG001	HONEYWELL VALVE NG - NLA Aug 2016	\$	-
CG009	HONEYWELL VALVE LPG	\$	185.30

## Residential Unitary Heater

UA06N2	60,000 BTU Head w 20' of Tubes & Reflectors	\$	2,100.00
UA06N3	60,000 BTU Head w 30' of Tubes & Reflectors	\$	2,413.00

### UAG Heaters include:

Rubber Gas Flex w Shut off, LV Thermostat, Wall Thimble, Vent Terminal, 10' Vent Pipe & Coupler plus Hardware Pkg & Cl Sign

## UA (UNITARY) SERIES HEATER WITH STANDARD STEEL TUBE

### All heaters include:

Rubber Gas Flex w Shut off, LV Thermostat, Wall Thimble, Vent Terminal, 10' Vent Pipe & Coupler plus Hardware Pkg & Cl Sign

UA04N1S	40,000 BTU Head w 10' of Tube & Reflectors	\$	1,228.00
UA06N2S	60,000 BTU Head w 15' of Tube & Reflectors	\$	2,066.00
UA06N2S	60,000 BTU Head w 20' of Tubes & Reflectors	\$	2,100.00
UA06N3S	60,000 BTU Head w 30' of Tubes & Reflectors	\$	2,413.00
UA08N2S or UA10N2S	80,000 or 100,00 BTU Head w 20' of Tubes & Reflectors	\$	2,155.00
UA08N3S or UA10N3S	80,000 or 100,00 BTU Head w 30' of Tubes & Reflectors	\$	2,469.00
UA08N4S or UA10N4S	80,000 or 100,000 BTU Head w 40' of Tubes & Reflectors	\$	2,654.00
UA12N3S	125,00 BTU Head w 30' of Tubes & Reflectors	\$	2,469.00
UA12N4S or UA15N4S	125,000 or 150,000 BTU Head w 40' of Tubes & Reflectors	\$	2,779.00
UA12N5S or UA15N5S	125,000 or 150,000 BTU Head w 50' of Tubes & Reflectors	\$	3,116.00

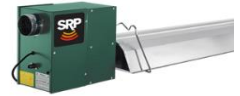


**UA (UNITARY) Con't**

UA17N5S *	175,000 BTU Head w 50' of Tubes & Reflectors	\$	2,990.00
UA20N5S	205,000 BTU Head w 50' of Tubes & Reflectors	\$	3,124.00
UA17N6S or UA20N6S	175,000 or 205,000 BTU Head w 60' of Tubes & Reflectors	\$	3,334.00
UA20N7S	205,000 BTU Head w 70' of Tubes & Reflectors	\$	3,645.00
UA22N6S	225,000 BTU Head w 60' of Tubes & Reflectors	\$	3,334.00
UA22N7S	225,000 BTU Head w 70' of Tubes & Reflectors	\$	3,645.00

\* For Fresh Air add \$ 38.00 / For Propane add \$ 49.50

**Burner Heads only and or UA Burner Head Change out lits available ..Call for Pricing**



**UX (UNITARY) SERIES HEATER WITH SEALED BURNER & ALUMINZIED TUBE**

**All heaters include:**

Rubber Gas Flex w Shut off, LV Thermostat, Wall Thimble, Vent Terminal, 10' Vent Pipe & Coupler plus Hardware Pkg & Cl Sign

UX04N1A	40,000 BTU Head w 10' of Tube & Reflectors	\$	2,132.00
UX06N2A	60,000 BTU Head w 15' of Tube & Reflectors	\$	2,420.00
UX06N2A	60,000 BTU Head w 20' of Tubes & Reflectors	\$	2,520.00
UX06N3A	60,000 BTU Head w 30' of Tubes & Reflectors	\$	2,899.00
UX08N2A or UX10N2A	80,000 or 100,00 BTU Head w 20' of Tubes & Reflectors	\$	2,574.00
UX08N3A or UX10N3A	80,000 or 100,00 BTU Head w 30' of Tubes & Reflectors	\$	2,954.00
UX08N4A or UX10N4A	80,000 or 100,00 BTU Head w 40' of Tubes & Reflectors	\$	3,195.00
UX12N3A	125,00 BTU Head w 30' of Tubes & Reflectors	\$	1,954.00
UX12N4A or UX15N4A	125,000 or 150,000 BTU Head w 40' of Tubes & Reflectors	\$	3,320.00
UX12N5SA or UX15N5A	125,000 or 150,000 BTU Head w 50' of Tubes & Reflectors	\$	3,723.00
UX17N5A	175,000 BTU Head w 50' of Tubes & Reflectors	\$	3,668.00
UX17N6A	175,000 BTU Head w 60' of Tubes & Reflectors	\$	3,976.00
UX20N5A	205,000 BTU Head w 50' of Tubes & Reflectors	\$	3,731.00
UX20N6A	205,000 BTU Head w 60' of Tubes & Reflectors	\$	4,007.00
UX22N6A	225,000 BTU Head w 60' of Tubes & Reflectors	\$	4,007.00
UX22N7A	225,000 BTU Head w 70' of Tubes & Reflectors	\$	4,374.00

\* For Fresh Air add \$ 38.00 / For Propane add \$ 49.50



**LA (Low Clearance) SERIES HEATERS WITH ALUMIZIED TUBE**

**All heaters include:**

Rubber Gas Flex w Shut off, LV Thermostat, Wall Thimble, Vent Terminal, 10' Vent Pipe & Coupler plus Hardware Pkg & Cl Sign

LA06N3A	60,000 BTU Head w 30' of Tubes & Reflectors	\$	2,958.00
LA06N4A	60,000 BTU Head w 40' of Tubes & Reflectors	\$	3,435.00
LA06N5A	60,000 BTU Head w 50' of Tubes & Reflectors	\$	3,870.00
LA08N4A	80,000 BTU Head w 40' of Tubes & Reflectors	\$	3,380.00
LA08N5A	80,000 BTU Head w 50' of Tubes & Reflectors	\$	3,816.00
LA10N5A	100,000 BTU Head w 50' of Tubes & Reflectors	\$	4,034.00

\* For Fresh Air add \$ 38.00 / For Propane add \$ 49.50



## LX (Low Clearance/Sealed Burner) SERIES HEATERS WITH ALUMINIZED TUBE

### All heaters include:

Rubber Gas Flex w Shut off, LV Thermostat, Wall Thimble, Vent Terminal, 10' Vent Pipe & Coupler plus Hardware Pkg & Cl Sign

LXA06N3A	60,000 BTU Head w 30' of Tubes & Reflectors	\$	3,237.00
LX06N4A	60,000 BTU Head w 40' of Tubes & Reflectors	\$	3,714.00
LX06N5A	60,000 BTU Head w 50' of Tubes & Reflectors	\$	4,149.00
LX08N4A	80,000 BTU Head w 40' of Tubes & Reflectors	\$	3,659.00
LX08N5A	80,000 BTU Head w 50' of Tubes & Reflectors	\$	4,094.00
LX10N5A	100,000 BTU Head w 50' of Tubes & Reflectors	\$	4,309.00

\* For Fresh Air add \$ 38.00 / For Propane add \$ 49.50

## TWO STAGE UNITARY & LOW CLEARANCE PRICING AVAILABLE on request.

### ACCESSORIES & PARTS (UA, UX, LA, LX, TA, TX)

CG052	GAS FLEX CONNECTOR 30" X 1/2" (30-150,000) RUBBER	\$	44.00
CG053	GAS FLEX CONNECTOR 36" X 3/4" ( 175,000 & up) RUBBER	\$	144.10
LV1	THERMOSTAT, LINE VOLTAGE FOR UA (was CE014)	\$	33.00
PSD158-B	THERMOSTAT, LOW VOLTAGE FOR UX & RE (was CE051)	\$	39.25
CE053	THERMOSTAT, NIGHT SET-BACK, LOW VOLTAGE	\$	109.50
0902R	THERMOSTAT, WATERPROOF, LINE VOLTAGE	\$	212.65
CE050	THERMOSTAT COVER, lockable for CE014, CE017, CE053 & CE055	\$	107.50
CE046	TRANSFORMER RELAY - to use low volt thermostat with UA. Will power up to 4 burners. Junction box required	\$	137.75
LV1	THERMOSTAT - LINE VOLTAGE - STD FOR "UA" ( WAS CE014)	\$	33.00
58122	WALL THIMBLE	\$	36.70
58201	VENT TERMINAL	\$	67.00
99004	CHAIN (per foot)	\$	1.10
99005	"S" HOOKS	\$	0.85
99011	LAG SCREW	\$	0.95
99012	EYEBOLTS c/w Double Nuts & Washers	\$	2.10
99020	4" GALVINIZED VENT COUPLER	\$	6.35
99009	4" x 10' GALVINIZED VENT PIPE	\$	42.00
99008	4" GALVINIZED 90 Degree VENT ELBOW	\$	18.40
58124	FRESH AIR INTAKE HOOD	\$	16.10
91911700	OUTSIDE AIR ADAPTER (Air Collar)	\$	9.50
99007	4' INSULATED FRESH AIR DUCT (per foot)	\$	1.75
99006	DUCT TIES	\$	2.20
CT024	90 Degree ELBOW PACKAGE	\$	265.40
CT080	180 Degree "U" TUBE PACKAGE (24" Wide)	\$	295.40

**ACCESSORIES & PARTS Con't.**

CR019-1	10' SIDE REFLECTOR PKG	\$	105.75
CR019-2	20' SIDE REFLECTOR PKG	\$	211.50
CR019-3	30' SIDE REFLECTOR PKG	\$	317.25
CR019-4	40' SIDE REFLECTOR PKG	\$	437.60
CR019-5	50' SIDE REFLECTOR PKG	\$	547.00
CR019-6	60' SIDE REFLECTOR PKG	\$	656.40
CR019-7	70' SIDE REFLECTOR PKG	\$	765.80
CR039	REFLECTOR 90 Degree MITER KIT	\$	129.10

**LOWER RADIANT SHIELD PKG available on request**

CT001	ALUM. H.T. 4" X 10' TUBE * LA / LX	\$	185.40
CT002	HOT ROLLED 4" X 10' TUBE * UA / UX	\$	125.60
UT002	ALUM. H.T. COMB. FLANGE TUBE * UA / UX	\$	226.00
UT013	UNIVERSAL FLANGE TUBE (Limited Quantities)	\$	236.00
CT012	NHT EXH. TUBE 4" X 10' * LA / LX	\$	175.05
UT004	NHT COMBUSTION TUBE 4" X 10'w/ Heat Shields * LA / LX	\$	458.00
CR001	REFLECTOR 124"	\$	128.95
CR002	END CAP	\$	23.55
CR003	HANGER	\$	18.90
CR024	REFLECTOR BRACKET & CLIP	\$	9.85
CR010	ALUMINZIED COUPLING	\$	40.45
CR011	VENT CONNECTOR	\$	21.95
UT003	INTERNAL SS HEAT SHIELD 48"	\$	115.90
CE006	IGNITION WIRE ASSEMBLY	\$	23.40
CE008	TRANSFORMER 115/24 20VA	\$	3,050.00
CE058	TRANSFORMER 115/24 40VA	\$	41.10
CE020	AIR SWITCH "U" 40, 60 BTU	\$	95.70
CE021	AIR SWITCH "U" 80, 100 BTU	\$	95.70
CE022	AIR SWITCH "U" 175 BTU, RE30	\$	95.70
CE023	AIR SWITCH "U" 220 BTU	\$	95.70
CE024	AIR SWITCH "U" 125, 150, 205 BTU	\$	95.70
CE025	AIR SWITCH "L" 60, 80 BTU, RE45	\$	95.70
CE142	AIR SWITCH "L" 100 BTU	\$	95.70
LE001	IGNITOR for LA/LX	\$	49.40
LE002	FLAME SENSOR for LA/LX	\$	51.45
CE002	IGNITOR PROBE "U"	\$	23.40
CE003	SENSE PROBE "U"	\$	23.40
CE005	MODULE DSI "UA" (Serial # prior to 95999)	\$	268.20
CE015	MODULE DSI Fenwal "UX, RE & UA" (after Serial 96***)	\$	379.75
CE266	MODULE DSI CNE "UX, RE & UA" (after Serial 96***)	\$	219.40
CE010	POWER CORD	\$	14.85
CE133	BLOWER ASSEMBLY "U & L" 40 - 175 BTU (CE004)	\$	243.80
CE013	BLOWER ASSEMBLY "U" 205-220 BTU	\$	347.50
CE031	OPERATING LIGHT (amber rectangle) Old Style	\$	21.45

CE057	OPERATING LIGHT (amber round) New Style	\$	21.45
CG142	VALVE, NG honeywell "U & RE"	\$	176.90



**HIGH INTENSITY - SERIES S HEAVEY DUTY HIGH INTENSITY HEATER**

SD03N	33,000 BTU (90 sq in Radiating Surface)	\$	784.00
SD06N	66,000 BTU (180 sq in Radiating Surface)	\$	1,001.00
SD09N	99,000 BTU (270 sq in Radiating Surface)	\$	1,218.00
SD12N	132,000 BTU (360 sq in Radiating Surface)	\$	1,449.00
SD16N	160,000 BTU (360 sq in Radiating Surface)	\$	1,460.00

SD03 - SD12 Available in LPG



**PREMIER VACUMM SYSTEMS**

*System Design available on request*

**STANDARD PREMIER VS SYSTEM**

**Premier VS Burners**

VSN1	BURNER ASSEMBLY includes	\$	1,523.75
VSN2	Burner & Control Housing w/ filter, flow plate install,		
VSN3	mount, gasket & U bolts		
VSN4			
VSN5			
VS-VH	20,000 thru 120,000 BTU Buners Available	\$	1,523.75

**(Digit in Part # indicates burner position in branch)**

VS022	COLLAR, Air inlet kit	\$	22.90
CG053	Rubber Gas Flex Connector 36" x 3/4"	\$	144.10

**Premier VS Pumps**

VE020	PUMP 'A' ASSEMBLY	\$	2,550.00
	Includes - Base with .75HP, 11/220 V motor, single phase		
	2 Flexible Connectors (6"), Adapter 4" to 6", Vacuum Switch		
	& Vibration Mounts / ** Add appropriate Damper Couplings		
VE021	PUMP "B" ASSEMBLY	\$	3,124.00
	Includes Base with 1.50HP, 230/460V, 3 Phase Motor		

2 Flexible Connectors (4"/6"), Adapter 4" to 6", Vacuum Switch  
& Vibration Mounts / \*\* Add appropriate Damper Couplings

VE024	Pump "A" Assembly with .75HP, 230/460V, 3 Phase	\$	2,729.00
VE023	Pump "B" Assembly with 1.5HP, 575 V, 3 Phase	\$	3,312.00
VE025	Pump "B" Assembly with 1.5HP, 110/230V Single Phase	\$	3,312.00
VE022	Pump "AA" Assembly for small systems 1/3HP, 115/230V, Single Phase	\$	2,120.00
VH010	PUMP MOUNTING PACKAGE	\$	123.85
VH044	CONDENSATE TRAP ASSEMBLY	\$	151.00

**TUBE / REFLECTOR SYSTEM PARTS**

VT001	COMBUSTION TUBE	\$	212.25
CT001	TUBE - HEAT TREATED ALUMINUM 10' X 4"	\$	185.40
CT002	TUBE - HOT ROLLED 10' X 4"	\$	125.55
CT012	TUBE - NON HEAT TREATED ALUMINIZED 10' X 4"	\$	175.05
CT010	ELBOW - 90 DEGREE ALUMINIZED	\$	138.50
CT020	U - TUBE - 180 DEGREE ALUMINIZED	\$	227.85
CT021	T - FITTING - ALUMINIZED 4" OD	\$	184.70
CT022	CROSS-FITTING - ALUMINIZED 4" OD	\$	238.10
CT044	VENT TERMINAL 6" - EXTERIOR WALL FLUE (PUMP B)	\$	221.15
CS033	WALL THIMBLE 6" (PUMP B)	\$	126.05
VS016	END VENT CAP ( 1 per system branch )	\$	23.65
CR003	HANGER - TUBE & REFLECTOR	\$	18.90
CR025	HANGER STRAP 4" - for unreflected tail pipe	\$	9.75
CR024	REFLECTOR BRACKET & CLIP SET ( use min. 2 per reflector )	\$	9.85
CR010	COUPLING	\$	40.50
CR015	DAMPER COUPLING	\$	80.10
CR001	REFLECTOR	\$	128.95
CR002	END CAPS FOR REFLECTOR	\$	23.50
CR039	REFLECTOR KIT - MITERED 90 DEGREE (for elbow)	\$	129.10
VR003	BURNER REFLECTOR	\$	157.50
UT002	COMBUSTION TUBE ALUM HEAT TREATED	\$	226.00

**VS SYSTEM CONTROLS**

VE095	ACCU-RATE DIGITAL PANEL (up to 4 Zones) Operating indicator lights / Post Purge Function	\$	1,130.50
-------	---	----	----------

Order Separately:

Thermostat for each zone

Appropriate motor starter relay (see chart)

VE034	VARIABLE FREQUENCY DRIVE "A" 1PH in/3PH out for 3/4 HP 230V 3PH Motor	\$	735.00
VE035	VARIABLE FREQUENCY DRIVE "B" 3PH in /3PH out for 1.5 HP 230V 3PH Motor	\$	890.00
CE139	THERMOSTAT 24 Volt Single Stage Digital	\$	82.75
CE053	THERMOSTAT 24 Volt Night Set Back	\$	109.50
CE050	THERMOSTAT COVER, lockable	\$	107.50
CE161	MOTOR STARTER RELAY PUMP A	\$	137.50
CE162	MOTOR STARTER RELAY PUMP B	\$	199.90
CE046	TRANSFORMER RELAY - SPST for one zone operation with 1 24V thermostat in lieu of control panel - Junction Box required	\$	137.75

CE047                                      TRANSFORMER RELAY - DPDT for two zone operation                                      \$                                      219.50  
with 2 24V thermostat in lieu of control panel - Junction Box required

**CONTACT / OVERLOAD CHART**

Part #			CE049	CE088	CE082	CE083	CE084	CE087	CE089	CE114
		\$	111.65	176.25	144.85	144.85	144.85	144.85	144.85	144.85
	<b>"AA PUMP 1/3 HP"</b>									
VE022	115V 1PH	4.8 amps	x				x			
VE022	208/230V 1PH	2.5/2.4 amps	x			x				
	<b>"A" PUMP 3/4 HP</b>									
VE020	115V 1PH	9.2 amps		x					x	
VE020	208/230V 1 PH	5.0/4.6 amps	x				x			
VE024	208/230V 3 PH	2.5/2.4 amps	x			x				
VE024	460 V 3 PH	1.2 amps	x					x		
	<b>"B" PUMP 1.5 HP</b>									
VE021	208/230V 3PH	5.0/4.2 amps	x				x			
VE021	460 V 3 PH	2.1 amps	x		x					
VE023	575V 3 PH	1.6 amps	x		x					
VE025	115V 1 PH	1.6 amps		x						x
VE025	208/230V 1PH	8.3/8.0 amps		x					x	

**SPECIALTY TUBING & OPTIONAL ITEMS**

CT055	ELBOW - 45 DEGREE 4" OD	\$	210.75
CT051	TEE - single Swept aluminized 4" OD	\$	315.00
CT050	TEE - double Swept aluminized 4" OD	\$	343.00
CR019	SIDE REFLECTOR	\$	64.25
CR016	SIDE REFLECTOR BRACKET ( order 3 per reflector )	\$	13.90
CR035	SIDE REFLECTOR RETAINER CLIP ( 1 clip per )	\$	8.65
CR018	BOTTOM SHIELD - 60"	\$	31.70
CR017	BOTTOM SHIELD BRACKET ( order 2 per shield )	\$	15.40
CT032	TUBE - COATED INSIDE ONLY 10' X 4" od 16 GA	\$	375.30
CT033	TUBE - COATED INSIDE & OUT 10' X 4" od 16 GA	\$	422.60
VT004	TUBE - COMBUSTION COATED INSIDE ONLY	\$	382.75
VT005	TUBE - COMBUSTION COATED INSIDE & OUT	\$	428.00
CT034	ELBOW - COATED INSIDE ONLY 4" OD, 16 GA	\$	231.35
CT035	ELBOW - COATED INSIDE & OUT 4" OD	\$	279.65
CT036	TEE - COATED INSIDE ONLY 4" OD, 16 GA	\$	410.20
CT037	TEE - COATED INSIDE & OUT 4" OD	\$	458.60
CT038	TUBE - ALUMINIZED 10' X 5" OD, 16 GA	\$	309.90
CT052	TEE - Single Swept, aluminized 5" OD	\$	720.80
CT039	TEE - Double Swept, aluminized 5" OD	\$	553.55
CT040	ELBOW - 90 DEGREE ALUMINIZED 5" OD	\$	181.75
CT041	REDUCER - ALUMINIZED 6" TO 5"	\$	102.50
CT042	REDUCER - ALUMINIZED 5" TO 4"	\$	83.60
CR029	HANGER STRAP - 5" diameter ( tailpipe )	\$	17.30
CR005	S/S COUPLING 4"	\$	72.05
CR027	S/S LINER FOR COUPLING	\$	36.30
VT003	S/S COMBINATION TUBE	\$	231.85
CT030	S/S RADIANT TUBE	\$	208.95
CR032	S/S REFLECTOR - 10'	\$	452.35
CR033	S/S SIDE REFLECTOR - 10'	\$	252.00
CT056	CROSS - ALUMINIZED 5" OD	\$	624.00
CT078	CROSS ALUM. 5" DBL SWEPT	\$	785.00



**VS REPLACEMENT PARTS**

VG016	BURNER HEAD VS150-250,000 BTU (Casting repl ass'y c/w gasket & elect	\$	455.60
VG026	BURNER HEAD Under 150,000 BTU (Casting repl ass'y c/w gasket & electrode)	\$	455.60
VE002	ELECTRODE ASS'Y	\$	109.50
VH001	FILTER	\$	59.00
VH001B	FILTERS (Box of 20)	\$	1,102.45
VG009	GAS VALVE - HONEYWELL	\$	222.10
CH002	AIR INLET ADAPTER GASKET	\$	4.75
CH007	GASKET - BURNNERHEAD	\$	4.50
VH005	GASKET - ELECTRODE VS	\$	7.30
VH003	GASKET - VS CASTING MOUNT	\$	7.05
VH006	GASKET SET - VS	\$	32.20
CE056	MODULE - DSI FENWAL	\$	322.05
VG018	ORIFICE - NAT	\$	14.85
VG019	ORIFICE - PROPANE	\$	14.85
CE010	POWER CORD	\$	14.85
VG010	REGULATOR - MAXITROL R-500Z	\$	317.30
CE057	RUN LIGHT (AMBER)	\$	21.45
CE036	SENSE LEAD (15")	\$	10.10
CH011	SIGHT GLASS ASS'Y	\$	13.05
CE006	SPARK LEAD (12")	\$	23.40
CE008	TRANSFORMER - 115/24 20V	\$	30.50
VH004	U-BOLT w/ NUTS	\$	15.10

**VACUUM PUMP PARTS**

VE007	VACUUM SWITCH - for vacuum pump	\$	122.75
VS010	VIBRATION BOOT PKG - 4" for vacuum pump	\$	107.05
VS048	VIBRATION BOOT PKG - 6" for vacuum pump	\$	133.25
VE030	MOTOR - 1.5 HP, 208/ 230/ 460V 3 PH	\$	1,194.25
VE031	MOTOR - 1.5 HP, 575 V 3 PH	\$	1,224.95
VE032	MOTOR - 0.75 HP, 115 / 230V	\$	683.85
VE039	MOTOR - 0.75 HP, 230 / 460V 3 PH	\$	683.85
VE049	MOTOR - 1.5 HP, 115 / 230V 1 PH	\$	1,356.65
VE051	MOTOR - 1/3 HP, 115 / 208-230V 1 PH	\$	648.40
VH011	RUBBER MOTOR MOUNT	\$	21.60
VS110	IMPELLER / PUMP A (Replaces VS025)	\$	415.10
VS026	IMPELLER / PUMP B	\$	415.10
VS061	IMPELLER / PUMP AA	\$	415.10
VE052	Replacement Circuit Board Ass'y VS	\$	1,369.00
VE043	RELAY - #G2R-1-S-DC24 (for Premier Control Panel)	\$	50.70
VE008	TRANSFORMER - 16V, Premier Panel	\$	46.45

**ALL TAXES EXTRA, IF APPLICABLE FOB SASKATOON  
PRICES ARE SUBJECT TO CHANGE WITHOUT NOTICE**

2016-08-31